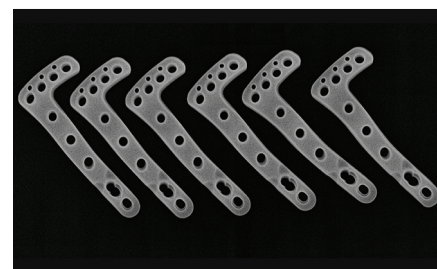
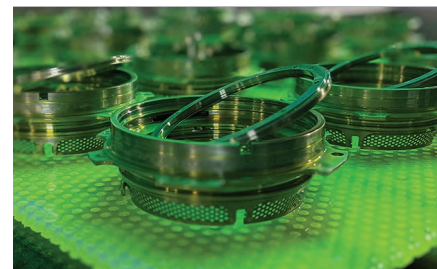
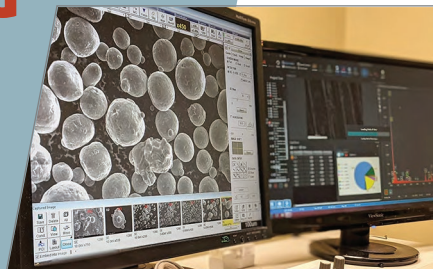


# METAL ADDITIVE MANUFACTURING TESTING

DESTRUCTIVE &  
NON-DESTRUCTIVE  
SERVICES

FROM FEEDSTOCK TO  
FINISHED PART



## Services at a Glance

### IN PROCESS

- Powder Characterization
- Specimen Machining
- Complex Extractions
- Build Cut Ups
- Build Characterization
- Machine Qualification
- Mechanical Testing
- Metallography
- Chemistry Analysis
- Fracture & Fatigue

### POST PROCESSING

- Heat Treating
- 2D Computed Radiography
- Fluorescent Penetrant
- Magnetic Particle
- Ultrasonic Testing

## Approvals

### AEROSPACE, DEFENSE & ENERGY

- Airbus
- Bell Helicopter
- Boeing
- Collins Aerospace
- Eaton Aerospace
- GE Aviation (GE-S-400)
- General Atomics
- General Dynamics
- Gulfstream
- Honeywell
- Lockheed Martin
- Northrup Grumman
- Pratt & Whitney
- Raytheon Technologies
- Rolls Royce
- Siemens
- Sikorsky

### SPACE

- Aerojet Rocketdyne
- Blue Origin
- NASA
- Space-X
- United Launch Alliance

### ORTHOPEDIC & SPINE

- Zimmer Biomet
- Smith & Nephew
- Globus Medical
- Depuy Synthes

## Quality & Compliance



ISO 9001 and ISO 13485 compliant  
GE Aviation S-400 approved lab  
Pratt & Whitney approved lab

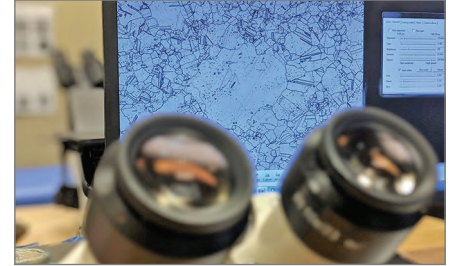
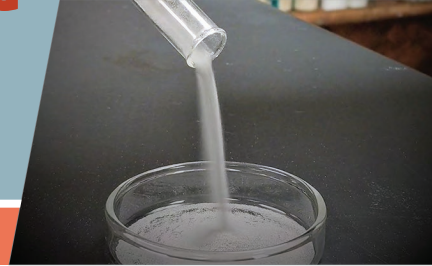


Scan to learn more!



www.labtesting.com

# METAL ADDITIVE MANUFACTURING TESTING



## SPECIMEN MACHINING

- Abrasive Waterjet & Wire EDM
- CNC multi-axis turning, milling & grinding
- Low Stress Grinding
- Specimen Polishing

## CHEMISTRY

- ICP-AES/OES - Bulk Elements
- ICP-Mass Spec - Trace Elements
- Interstitial Elements - C, S, O, N, H
- EDX Elemental Mapping
- "Spark" AES
- Wet Chemistry

## METALLOGRAPHY

- Grain Size
- Microstructure
- Density
- Macrostructure / Grain Flow
- Surface Contamination
- Alpha Case Analysis
- Microhardness
- SEM / EDX Analysis

## MECHANICAL TESTING

- Tensile
- Compression
- Stress Rupture
- Creep
- Hardness
- Bearing & Shear
- Bend
- Charpy Impact

## FRACTURE & FATIGUE

- Fracture Toughness
- Fatigue Crack Growth
- High & Low Cycle Fatigue

## NONDESTRUCTIVE

- 2D Radiography - Computed & Film
- Fluorescent Penetrant
- Magnetic Particle
- Ultrasonic Testing - Immersion & Contact
- Visual Inspection



## Single Source Solution / Save Time and Money

With the rapid advances in Additive Manufacturing, a reliable testing partner is vital to ensuring quality products and meeting tight deadlines. Laboratory Testing Inc. offers a comprehensive array of services for testing input materials, prototypes and finished products and for comparison testing of these materials with those produced by traditional methods.

For information on our Powder Characterization Services, see our complimenting line card for details.

Celebrating

40 Years

1984 - 2024

2331 Topaz Drive | Hatfield, PA 19440

215.997.9080 Phone | 800.219.9095 Toll Free

[sales@labtesting.com](mailto:sales@labtesting.com)